



# Executive Challenge Academy Programs

## 2024



Leadership development programs for people who are ready to advance their careers and create impact in their organisations and sectors.

### Why Choose Us

- ✓ Dynamic and rigorous content
- ✓ Nationally recognised faculty
- ✓ High level of support
- ✓ Genuine graduate success

At the Executive Challenge Academy (ECA), we understand the challenges and opportunities you face. By providing transformational leadership learning and development through our faculty of cutting-edge thought-leaders, experienced CEOs, alumni and systems change agents from Australia and overseas, we build leadership knowledge and experience so you can achieve great things.

At ECA, you will step out of your everyday context and into a dynamic, ongoing learning community. Here you will become immersed in new thinking and new ways of approaching your challenges, and make connections with

innovative leaders from across sectors and around the world.

The Executive Challenge Academy has over 14 years of practice in collaborative leadership development and transformation and is strategically positioned to work with you to create cutting edge practice in leadership. Our 'dynamic learning' philosophy of encouraging new ideas, new approaches and new connections creates an environment of rich development. The Executive Challenge Academy also has an active alumni of over 1300 people across government, business and NGO sectors.

### Benefits for Learners

- ✓ Enhance and strengthen your skills as a leader and decision-maker within your organisation.
- ✓ Learn at your own pace with the convenience of online learning and flexible start dates.
- ✓ Interact with world-class faculty and fellow high-potential learners from around the country.
- ✓ Become part of an Alumni of executives that continue to network and learn through organised opportunities.

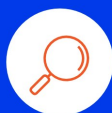
### Benefits for Organisations

- ✓ Efficiently scale leadership development across teams.
- ✓ Leverage the flexibility for leaders to adapt learnings to corporate challenges.
- ✓ Ensure better communication through a common leadership vocabulary.
- ✓ Sponsor action learning projects that enhance organisational functioning.



### Flexible Learning Options

Our programs are a mix of self-paced online modules, guided tutorials, network collaboration and face-to-face sessions.



### Program Offerings

We offer a range of programs designed to recognise your experience and career ambition.



### Expert Faculty

Our faculty and program leaders are cutting-edge thought-leaders, experienced CEOs, alumni and systems change agents from Australia and overseas.

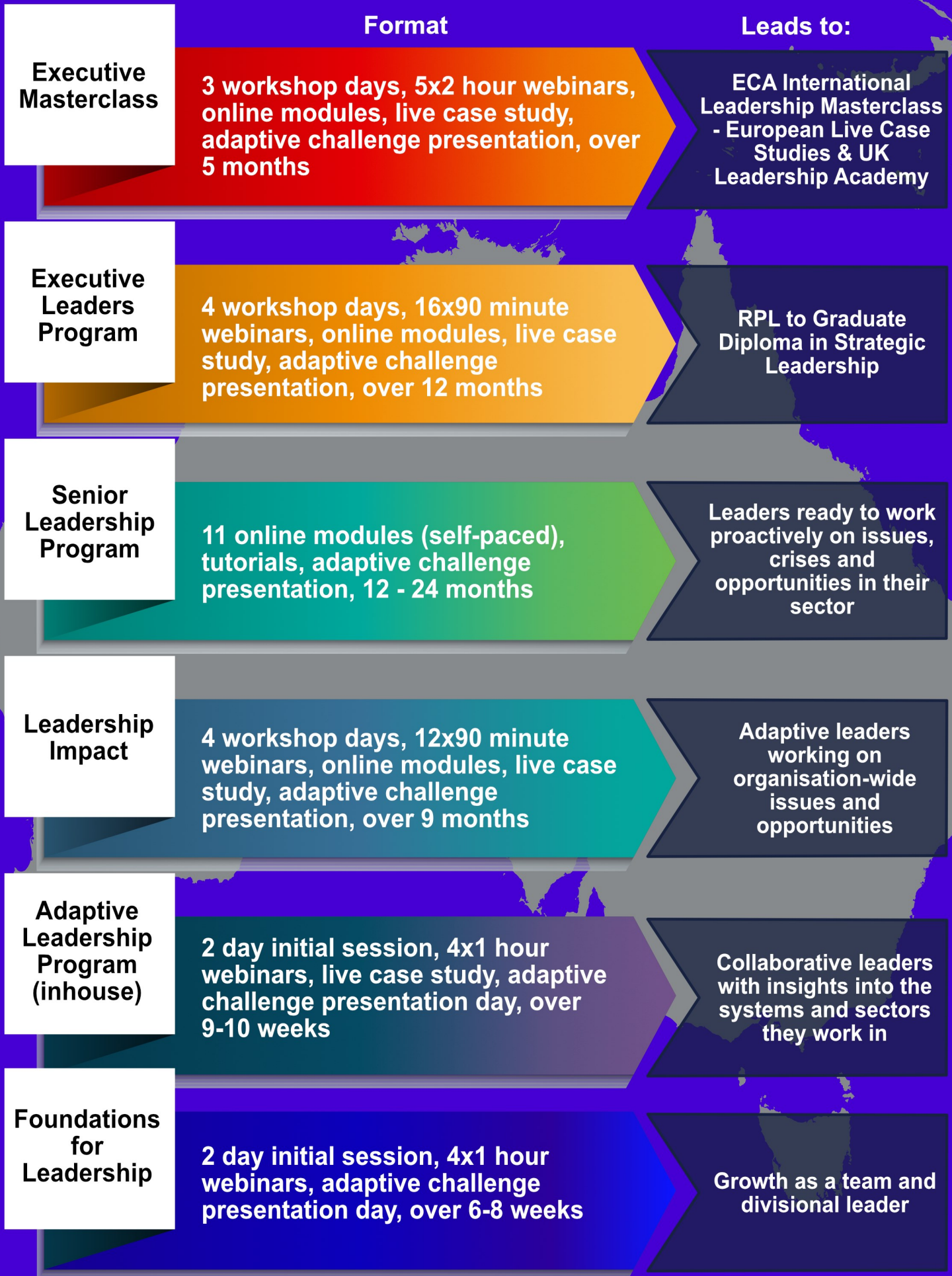


### Qualification Outcomes

If you choose, we have partnership arrangements with tertiary institutions where your ECA participation can be used to gain Post Graduate Diploma qualifications.

The Executive Challenge Academy is delivered by Alliance for Leadership Learning - a social enterprise organisation dedicated to investing in place-based, cross sectoral leadership development.





# ECA Program Journey

Our programs are a mix of in-person workshops, monthly webinars and online content modules that connect participants with each other and engage them with world-leading experts.

Part of the success of our programs arises through participants applying the program concepts to an adaptive challenge they are grappling with in their organisation or sector and presenting their findings to a executive panel of industry experts.



## Orientation & Leadership story

Orientation starts with leaders gathering to connect as a cohort, share their leadership journey so far and look at the complexity of work and leadership.



## Online Learning Modules

Online learning modules offer access to program resources on various topics and include practical tools, videos, reflective questions, quizzes and resource materials to maximise learning .



## Keynote Webinars

Regular webinars engage participants with world-leading experts that provoke deep thinking on critical topics.



## Online Learning Modules



## In-person Workshop

In-person workshops explore key themes and practical topics and allow participants to network and collaborate on their adaptive challenge work.



## Online Learning Modules



## Live Case Study

Live Case Study is an experience based learning method where the participants analyse the 'real challenges and opportunities' of an organisation in a diverse sector through an on-site visit.



## Group Learning Sets

Group Learning sets bring current work issues/challenges to the group to be worked through in a reflexive manner.



## Adaptive Challenge Presentation

Present your adaptive challenge and gain targeted feedback from industry experts and peers.



## Alumni

Continue to build your leadership capabilities, profile and connections with over 1400 Alumni around the world.

Adaptive Challenge Project

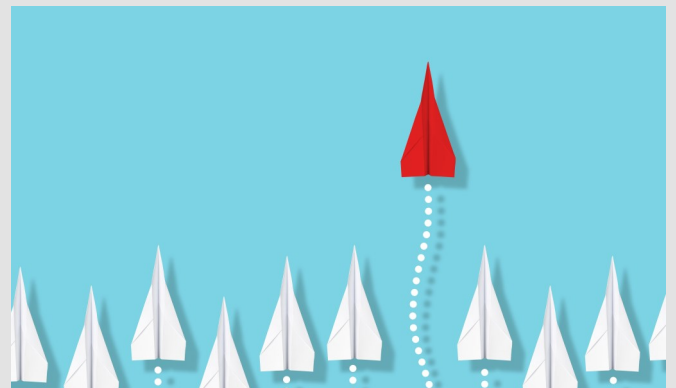


## Foundations for Leadership

<b>Target Audience:</b>	People from organisations or community groups who lead others
<b>Course Type:</b>	Blended
<b>Duration:</b>	10 weeks
<b>Investment:</b>	\$2750
<b>Pathway:</b>	Leadership Impact program, Transformation Academy

## Adaptive Leadership (inhouse)

<b>Target Audience:</b>	Organisational senior and executive leaders who are engaged with strategic or public leadership
<b>Course Type:</b>	Blended
<b>Duration:</b>	10 weeks
<b>Investment:</b>	\$2500 per person
<b>Pathway:</b>	Executive Leaders, Masterclass, Graduate Diploma in Strategic Leadership



## Leadership Impact program

<b>Target Audience:</b>	People who are engaged with strategic or public purpose leadership
<b>Course Type:</b>	Blended
<b>Duration:</b>	10 months
<b>Investment:</b>	\$5500
<b>Pathway:</b>	Executive Leaders, Graduate Diploma in Strategic Leadership



# ECA Program Snapshots 2

## Senior Leaders Program

<b>Target Audience:</b>	Mid-career professionals with management experience, who are preparing to take on enhanced leadership roles
<b>Course Type:</b>	Online (self-paced)
<b>Duration:</b>	12-24 months
<b>Investment:</b>	\$4000
<b>Pathway:</b>	ECA programs, Post Graduate Diploma in Strategic Leadership



## EXECUTIVE LEADERS



## Executive Leaders

<b>Target Audience:</b>	Executives who have a strategic, sector-wide or systems change focus
<b>Course Type:</b>	Face-to face and Blended
<b>Duration:</b>	12 months
<b>Investment:</b>	\$7700
<b>Pathway:</b>	Executive Masterclass, International Live Case Study, Post Graduate Diploma in Strategic Leadership

## Executive Masterclass

<b>Target Audience:</b>	Leaders who wish to engage in organisational and Sector-wide collaborative projects
<b>Course Type:</b>	Face-to-face and blended
<b>Duration:</b>	4-6 months
<b>Investment:</b>	\$5500
<b>Pathway:</b>	Graduate Diploma in Strategic Leadership, International live case study tour



# Leadership & Governance Towards Sustainable Futures



**5 to 11 October 2024 The Hague,  
Netherlands**

Being conducted in The Hague through the Netherlands School of Public Administration (NSOB) from Saturday, 5 October to Friday, 11 October, this International Live Case Study seeks to delve into the complexities of climate-related challenges, emphasising the need for transformative leadership and governance to build sustainable and just futures, emphasising the interconnectedness of all sectors and stakeholders and the need for radical collaboration in addressing the global climate issues.

The leaders participating in this International Live Case Study will co-design the experience according to their interests and perspectives. The purposeful learning and exploration activities will equip participants with practical skills and knowledge for public value creation. This program will be built on continual engagement with partners and broader networks to detect signals and uncover opportunities to inform public policy.

The International Live Case Study seeks to delve into the complexities of climate-related challenges, emphasising the need for transformative leadership and governance to build sustainable and just futures, emphasising the interconnectedness of all sectors and stakeholders and the need for radical collaboration in addressing the global climate issues.

## **Program Fees**

The program is \$A9,900 (including GST). The fees will cover:

- Accommodation from Saturday 5 October 2024 to Friday 11 October 2024
- Continental breakfast and lunch each day from Sunday 6 October to Thursday 10 October 2024 (breakfast only Friday 11 October)
- Dinner on Sunday 6 October and Thursday 10 October
- NSOB tuition and venue fees
- Venue and catering fees for Brisbane-based events

[Full brochure link](#)



We bring some of the world's best thought-leaders to you in one-day 'done and dusted' workshops held throughout the year.

Led by internationally acclaimed experts, the sessions will focus on current and critical leadership topics. These may include:

- Leading with Wisdom with Dr Mark Strom
- Governing Futures in the Present with Dr Liam Mayo
- Ethics, Integrity and Accountability with Professor Ann Tiernan
- Radical Collaboration with Professor Silke Meyer
- Leadership Identity with Professor Amanda Sinclair and Dr Christine Nixon

## Women Leading Series

- Resilient leaders with Dr Amanda Sinclair
- Practical Leadership with Dr Christine Nixon
- Systems and Complexity with Dr Ingrid Burkett and Viv Read
- Transforming systems through radical collaboration with Professor Silke Meyer
- Artificial Intelligence and Growth Mindset with Dr Elissa Farrow
- Futures Literacy with Dr Jeanne Hoffman.

## Program Format

In-person workshops. Expert speakers supported by faculty and practitioners with pre-reading and before-session question prompts to stimulate engagement.

## Program duration

1 day sessions

## Webinar fees

\$990 (including GST) / session

## Pathway option

Executive Leaders, Masterclass,  
International Live Case Study Tours

## Venue

Brisbane City

## 2024 Dates

8 February 2024 Emerging Futures with Dr Liam Mayo

28 May 2024 (Transforming systems through radical collaboration) with Professor Silke Meyer

12 June 2024 (Lead with Wisdom) Dr Mark Strom

Other dates to be advised.





## Executive Challenge Academy Information Request

Please tick programs you would like more information on:

- |   |  |
|---|--|
| <input type="checkbox"/> Foundations for Leadership | <input type="checkbox"/> Adaptive Leadership (inhouse) |
| <input type="checkbox"/> Leadership Impact program  | <input type="checkbox"/> Senior Leaders Program        |
| <input type="checkbox"/> Executive Leaders          | <input type="checkbox"/> Executive Masterclass         |
| <input type="checkbox"/> Webinar Series             | <input type="checkbox"/> International Live Case Study |

Contact Person details:

Name:
Position:
Organisation:
Email:
Phone:
Mobile:

Email a copy of this page to: [info@allianceforleadershiplearning.com.au](mailto:info@allianceforleadershiplearning.com.au)